



**Mottcell**  
山木新能源

深圳市山木新能源科技股份有限公司

**Shenzhen Mottcell New Energy Technology Co., Ltd**

Add: Mottcell Industrial Park, Wushi Road, Kengzi Street, Pingshan District, Shenzhen City, China

Tel: 0086-0755-84042755

Fax: 0086-0755-84042963



**MODEL: SM-LFP-10440J-200mAh**

- LiFePO4 Battery cell

<b>GENERAL</b>	
Nominal Voltage	3.2V
Nominal Capacity	200mAh
Energy density	71..1Wh/Kg
Resistance	≤120 mΩ

<b>CHARGE</b>	
Charge condition	CC to CV
Maximum Charge Current	0.2A

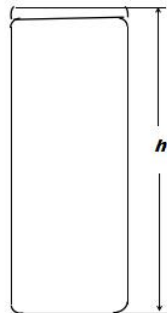
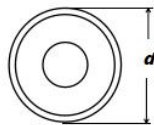
<b>DISCHARGE</b>	
Discharge cut voltage	2.0V
Standard constant discharge current	0.1A
Fast constant discharge current	0.2A
Max constant discharge current	0.6A
Peak discharge current	1A, 5s

<b>MECHANICAL</b>	
Dimension (Diameter x Height)	10*44 mm
Weight	approx.9 g
Cycles	2000 times

<b>TEMPERATURE</b>	
Discharge Temperature	-20 ~ 60 °C
Charge Temperature	0 ~ 55 °C
Storage Temperature	-20 ~ 55 °C

<b>COMPLIANCE</b>	
Certifications	CE, BIS, UN38.3, UL1642, IEC62133
Shipping Classification	UN 3480, CLASS 9

**OUTLINE DIMENSION**



d (mm)	h (mm)
10.2±0.2	44.9±0.3



**Mottcell**  
山木新能源

深圳市山木新能源科技股份有限公司

**Shenzhen Mottcell New Energy Technology Co., Ltd**

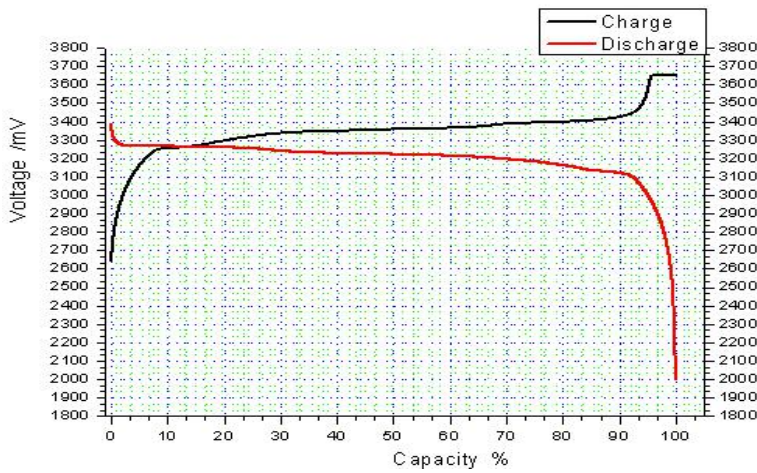
Add: Mottcell Industrial Park, Wushi Road, Kengzi Street, Pingshan District, Shenzhen City, China

Tel: 0086-0755-84042755

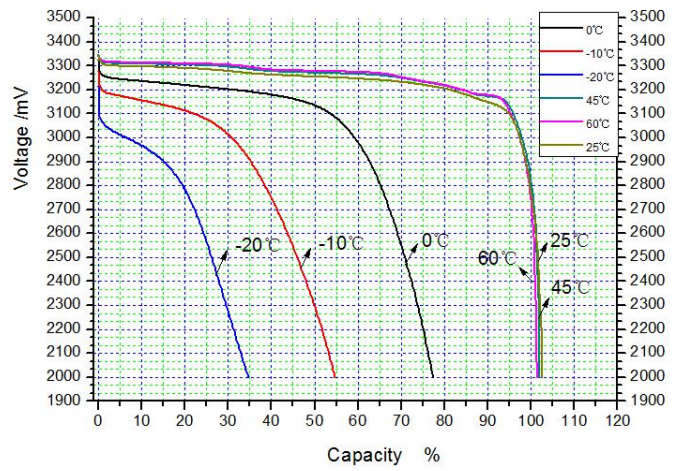
Fax: 0086-0755-84042963

**CHARACTERISTICS**

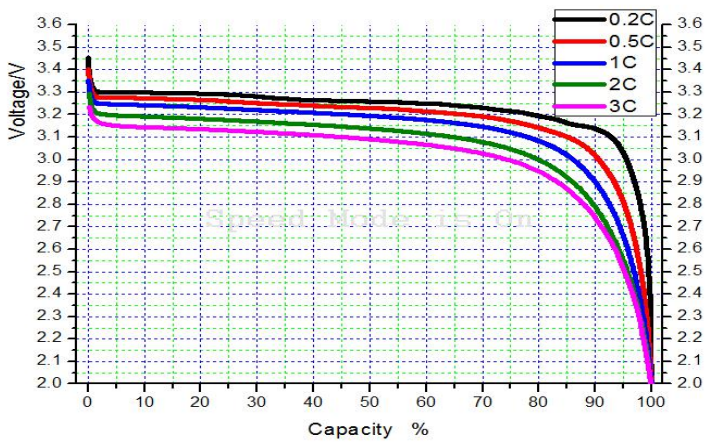
Charging/Discharging Curve



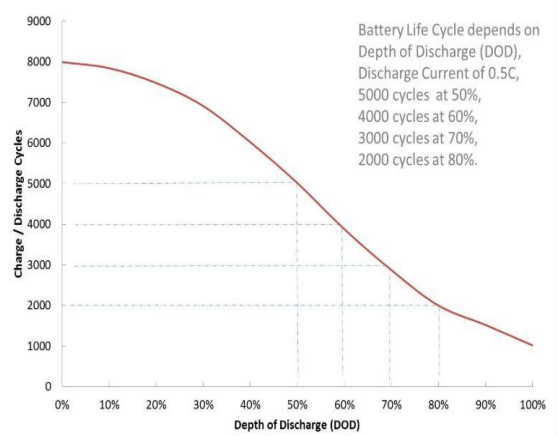
Difference Temp Discharging Curve



Difference Rate Discharging Curve



Cycle Life @ DOD Curve



**CAUTIONS**

- Do NOT short circuit, reverse polarity, crush or disassemble.
- Do NOT heat or incinerate.
- Do NOT immerse in any liquid.
- Only use LiFePO4 charger.
- Store at 30~50% SOC. Recharging every 3 months is recommended.
- The storage area should be clean, cool, dry and ventilated.